

# FLY-LINK®

## Quick Installation Guide

### Troubleshooting

**Q** I can't log in to AP's web-based management interface after entering 192.168.0.254 in the browser's address bar, what should I do?

- A:**
1. Verify that your PC's IP address is set to any value between 192.168.0.2-192.168.0.253.
  2. Try a different browser or delete your existing browser's cache and cookies. Make sure your browser's connection mode is "Never dial connection".
  3. Restart your PC if you are using Windows 98 OS and have changed your PC's IP address.
  4. Verify that your wireless adapter is working correctly. Renew adapter's drive in presence of multiple connection failure.

**Q** My PC is unable to search AP's wireless network, what should I do?

- A:**
1. Verify that wireless is enabled on your PC.
  2. Make sure that AP is correctly powered.
  3. Remove any large metal objects in between your PC and AP.
  4. Clear any interference sources such as cordless telephones and microwave ovens, etc.

### Factors that may adversely affect wireless signal range:

Maximum wireless signal rate is derived from IEEE Standard 802.11g and 802.11n specifications. Actual data throughput will vary due to factors below:

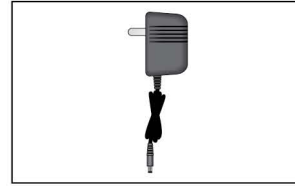
1. Network conditions such as volume of network traffic lower actual data throughput.
2. Environmental factors such as building materials and construction will adversely affect wireless signal range.
3. Electronic Interference: Wireless network devices commonly use the 2.4 GHz radio wave frequency to transmit and receive data. When other nearby electronic devices such as cell phones, radio transmitters and microwaves emit this frequency, they interfere with the network's signal transmission.
4. Physical obstacles also cause wireless signal loss. When radio waves pass through a medium, signal degradation occurs because the object absorbs some of the signal or scatters it. Thicker objects absorb a larger portion of the wireless signal.

# 1

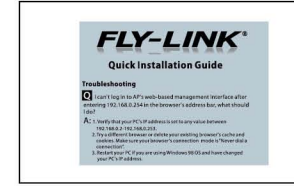
**Unpack and check the following:** (Product images depicted herein are for references only, actual appearance may vary.)



Wireless AP



Power Adapter



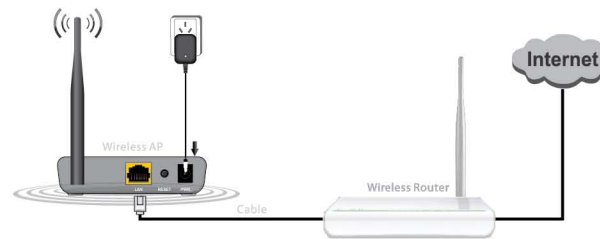
Quick Install Guide

# 2

**Installation** (The AP supports wireless AP and WDS working modes.)

### Wireless AP Mode

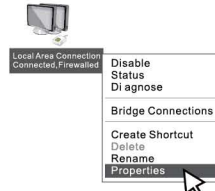
Use this mode if you want to connect the AP to an Internet-service-enabled wired router using an Ethernet cable. The wireless AP mode creates a wireless network for you by converting the wired signal by your existing wired router into wireless signal. Connect one end of an Ethernet cable to the AP and the other to your existing wired router.



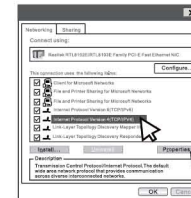
**B** Configure your PC's IP settings

**a. In Windows 7**

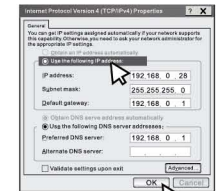
1. Click "Network" icon > "Properties" > "Change adapter settings" > "Local Area Connection" > "Properties".



2. Select "Internet Protocol Version 4 (TCP/IPv4)" and click "Properties".



3. Click "Use the following IP address" and enter "192.168.0.x" (x can be any number from 2 to 253) in the IP address box.

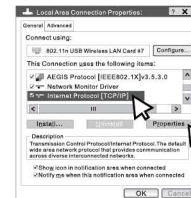


**b. In Windows XP**

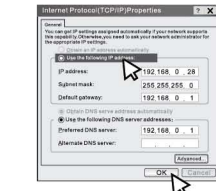
1. First right click "My Network Places" and select "Properties". Then right click "Local Area Connection" and select "Properties".



2. Select "Internet Protocol (TCP/IPv4)" and then click "Properties".



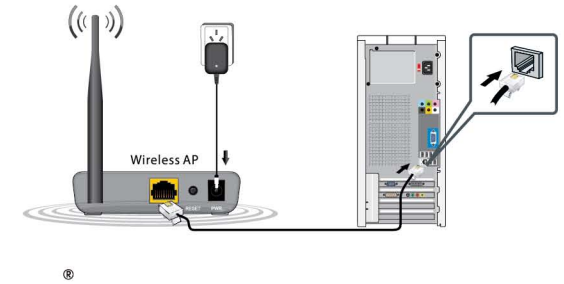
3. Click "Use the following IP address" and enter "192.168.0.x" (x can be any number from 2 to 253) in the IP address box.



### WDS Mode

Use this mode if you want to wirelessly connect the AP to an Internet-service-enabled wireless router or AP.

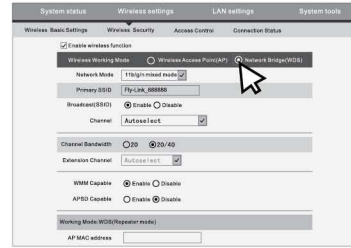
**A** Connect the LAN port on AP to your PC using an Ethernet cable.



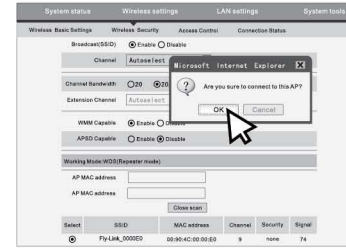
**C** Open a web browser, enter <http://192.168.0.254> in the address bar and then press "Enter".



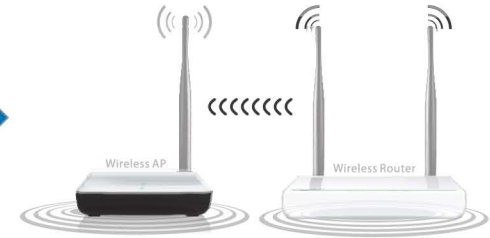
**D** On the main interface below, click "Wireless Settings" and select "WDS" as current wireless working mode.



**E** Enable the Scan function and select your link partner's SSID from the scan list. Then click OK.



**F** Repeat steps D-E on your link partner (wireless router or AP). (Note: SSID, channel, security mode and security key must be the same on both your AP and its link partner for successful WDS implementation).



### 3 Connect your PC to AP wirelessly

Before following steps below, verify that you have installed and enabled your wireless adapter.

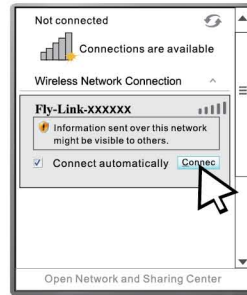
**Note:** The default SSID (wireless network name) for the AP is Fly-Link\_XXXXXX (XXXXXX stands for the last 6 characters in AP's MAC).

#### In Windows 7

**A** Click on your desktop.



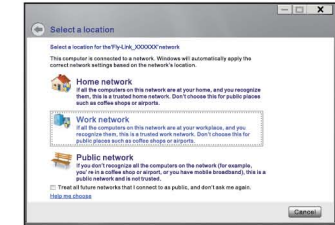
**B** Select your AP's SSID and click "Connect".



**C** You have successfully connected your PC to the AP wirelessly when you see "Connected" next to the AP's SSID.

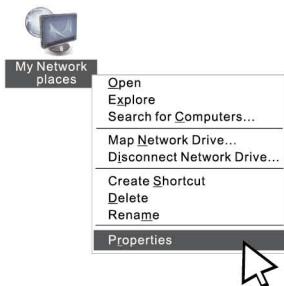


**D** Choose your network location

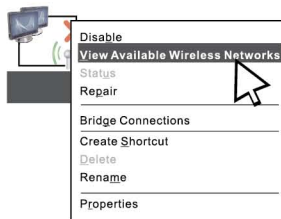


#### In Windows XP

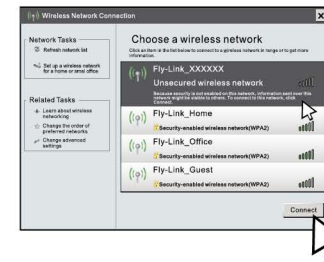
**A** Right click "My Network Places" and select "Properties".



**B** Right click "Wireless Network Connection" and select "View Available Wireless Networks".



**C** Select the AP's SSID.



**D** Click "Connect Anyway".

